

INNOVATIVE SOLUTIONS TO ADDRESS WOMEN'S UNPAID CARE WORK IN RURAL SENEGAL



PROBLEM

WHAT ARE THE WOMEN'S CHALLENGES IN RELATION TO UNPAID CARE WORK?

WOMEN DO 3 MAIN TYPES OF UNPAID WORK:

1 CARE WORK

Care of their husband, children, the elders, and the sick or disabled relatives and in-laws



2 DOMESTIC WORK

Preparation of meals, laundry, collection or purchase of water and firewood, housekeeping



3 COMMUNITY WORK

Voluntary activities for the local municipality, the village or the religious community



♀ 4h Women devote 4 hours a day to housework and childcare, compared to only 30 minutes for men.
♂ 0.5h

45% of women have to take care of a family member with a chronic health problem or a disability on a daily basis.

45%

12h Sometimes, I spend up to 12 hours a day on unpaid care work.



3h - 6h

Rural women are forced to limit their income-generating activities (between 3 and 6 hours a day) due to unpaid work.

SOLUTIONS

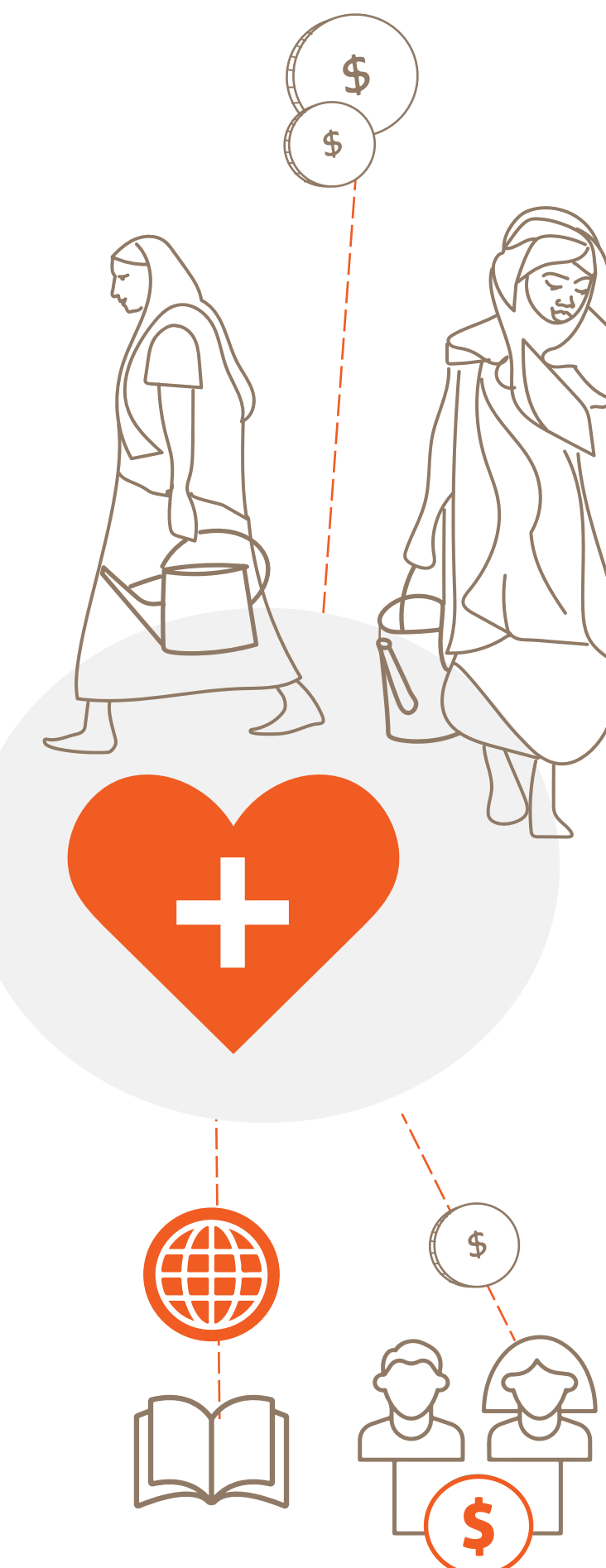
WHAT ARE THE POSSIBLE SOLUTIONS TO ADDRESS THESE CHALLENGES?

1 ADAPTED MODELS OF HEALTH INSURANCE

Develop a health care coverage and financing model that allows for the redistribution of women's unpaid care work

1. Adapt the offer of services to the needs of women in rural areas and the informal sector: via insurance premiums tailored to income level and digital channels to facilitate enrolment.

2. Design sustainable models to ensure the long-term financing of these services together with local authorities, such as by leveraging savings groups, in-kind contributions and collective fields.



3. Increase awareness and adoption of insurance services through education and awareness raising by leveraging both community and digital channels, and by leveraging group membership through cooperatives.



Trainings in local languages via the mobile phone and the voice channel.

2 FINANCIAL AND DIGITAL INCLUSION

Work with the private sector to develop financial products that meet the needs of rural women related to unpaid care work:

1. Improve access to formal savings and insurance mechanisms via mobile money and digitize existing community-based financing mechanisms (tontines)

2. Develop digital tools to improve rural women's financial education and skills



3 INNOVATIVE CHILD CARE STRUCTURES AND MODELS

Invest in childcare facilities in rural localities together with the municipalities and the communities

Assess the possibility of creating community childcare centers.



4 BASIC AND HEALTH INFRASTRUCTURE

Invest in basic infrastructure and in innovative models to improve access to energy and water for a reduction of women's domestic work.



Explore pay-as-you-go mechanisms to facilitate women's access to modern energy and solar technologies for domestic and productive uses.

5 CHANGING SOCIAL NORMS

Promote a change in social norms for better recognition, reduction and redistribution of women's unpaid work through a dialogue at the national and local level, including with religious and community leaders, and for its inclusion in Local Development Plans.

